



MIRACLE PROFESSIONAL DRESSING

Peel & Place
(MPD)

Overview and Case Studies

MPD Case Studies and Before/After Photos

Case Study: Second Degree and Superficial Third Degree Burns

A nine year old patient sustained 2nd and superficial 3rd degree burns on his buttocks and a 2nd degree burn on his back. The superficial 3rd degree burn covered 10% of his buttocks.

He was treated at a major burn center using standard burn care. The boy was sent home to have his parents change his dressing on a daily basis. Four days of these daily wound changes severely traumatized the patient and the wound. The boy refused to allow another wound change and was referred for Miracle Dressing placement.



Total disruption of 2nd and superficial 3rd degree burn wounds by standard wound care.



Miracle Dressing in place on April 12th. The boy no longer experienced pain.



Miracle Dressing was removed after 21 days, at which time the wound was healed, no scars.

Case Study: Pressure Injury Wound Care

A retired 87 year old man's health had declined and he became more wheel chair dependent and bed bound, eventually developing Stage 1 and Stage 2 sacral and buttocks pressure wounds, secondary to atrophic skin. Standard wound dressing changes had disrupted the surrounding skin and enlarged the wound.



Miracle Dressing was applied across the entire affected area on October 3.



Miracle Dressing was removed after 21 days. With typical wound care treatments, these wounds may never have healed to this extent.

Case Study: Lower Leg Bruise



95 + year old patient fell 4 days prior to coming into the office with a skin tear and heavy bruising.



The 21-day breathable, stay-in-place Miracle Dressing was then applied.



The Miracle Dressing was intact and still in place after 20 days.



The Miracle Dressing was carefully removed with isopropyl alcohol.



The Miracle Dressing in the process of being removed with isopropyl alcohol.



The vastly improved speed and quality of healing was evident the skin's condition, mimicking the skin quality of a 50-year-old.

Case Study: Skin Tear on Elderly Patient's Elbow

An 87 year old patient sustained a skin tear on her elbow three days before arriving for treatment.

Wounds near joints have extreme difficulty healing and marked increased propensity to get infected. If this wound had been treated with standard procedures, this wound would have resulted in a horrible scar.



Miracle Dressing was applied on February 1.



Miracle Dressing was removed after 20 days. This wound typically would have taken at least two and a half months to heal.

Case Study: Scalp Radiation and Skin Cancer Surgery Wound Care

Three and a half months before this 72 year old man came into the office, the patient had had a significant skin cancer removed from his scalp. As a result of this surgery, and a history of radiation therapy, he was left with a large wound and no healing had taken place because of the lack of collateral circulation around the wound. Typically, such a wound would require approximately 150 stitches to bring the sides together to close the wound.



Miracle Dressing was applied on March 24.



Miracle Dressing was removed after 21 days. This wound typically would have taken many months to heal to this extent.

Case Study: Wound Closure Without Using External Stitches

An 80+ year old woman with an 1.5 x 3.5 cm elliptical lesion. Miracle Dressing was used to replace external stitches and eliminate any scarring.



Elliptical excision of a basal cell carcinoma on her left cheek.



Undermining and deep Dexon absorbable sutures placed to close the wound.



Miracle Dressing was applied.



18 days later the Miracle Dressing fell off on its own....



...leaving a completely healed wound without external stich wounds.



Only 28 days after removal of Miracle Dressing, the wound is virtually invisible.

Case Study: Wound Closure Without Using Stitches

A 3 ½ year old male child fell on the edge of a coffee table. The injury penetrated through the dermis and subcutaneous tissue down to the muscle. The patient experienced tremendous bleeding.



The Miracle Dressing was placed without stitches, and using no anesthesia.



At 2 ½ weeks after the injury and the Miracle Dressing placement. The dressing fell off three days later.



The patient five weeks after the injury.

MPD Wound Monitoring Feature

Because Miracle Professional Dressing is an extremely thin, relatively transparent, non-woven regenerated cellulose fiber bandage, it hugs the wound and surrounding skin. This allows the length, width, and depth of the wound to be easily measured.



Miracle Professional Dressing (MPD)

MPD is the combination of the Miracle Professional Dressing and Natural Marine Extract Time Release Crystals. The Miracle Professional Dressing (MPD) has a dressing component of a non-woven, regenerated cellulose fiber bandage with a pressure-sensitive adhesive. It has high moisture vapor permeability and 1 mm perforations spaced on 3 mm centers. There are non-perforated lanes along the longitudinal edge (and along the center of wider dressings). It is available in widths up to 4 inches and various lengths up to 15 feet. There are diagrams and photos below that show the different configurations of the dressing and micrographs showing the 1 mm perforations and the various sizes of micropores formed by the cellulose fibers.

MPD also contains Natural Marine Extract™ Time Release Crystals (NME). The NME is in the form of lyophilized crystals composed of extracts from various marine animals and botanicals, including sea abalone and sea cucumber. These ingredients have been shown to rejuvenate old, atrophic skin and help heal even some of the most recalcitrant wounds.

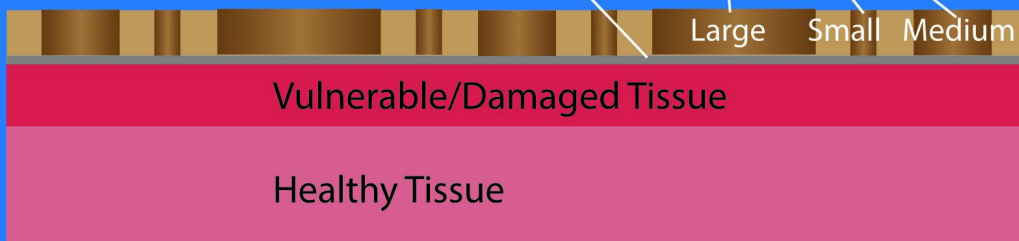
Once or twice a day, rinse the Miracle Dressing with tap water (shower, saturated gauze or wash cloth compresses). MPD is impregnated with Natural Marine Extract but should you desire additional healing: After rinsing with water, blot the Miracle Dressing dry and then: Apply Miracle of the Sea Natural Marine Extract in Aloe Vera Gel – or your favorite humectant - after every water rinse or at least twice a day. Using a cotton tipped swab, spread a small amount of Aloe Vera Gel / humectant onto the Miracle Dressing and allow it to be absorbed into the wound and the surrounding skin through the Miracle Dressing.

Miracle Professional Dressing Illustrations

Miracle Professional Dressing™

Perforations and Medium & Small Pores

NME™ Time-Release Crystals
in agglutinant

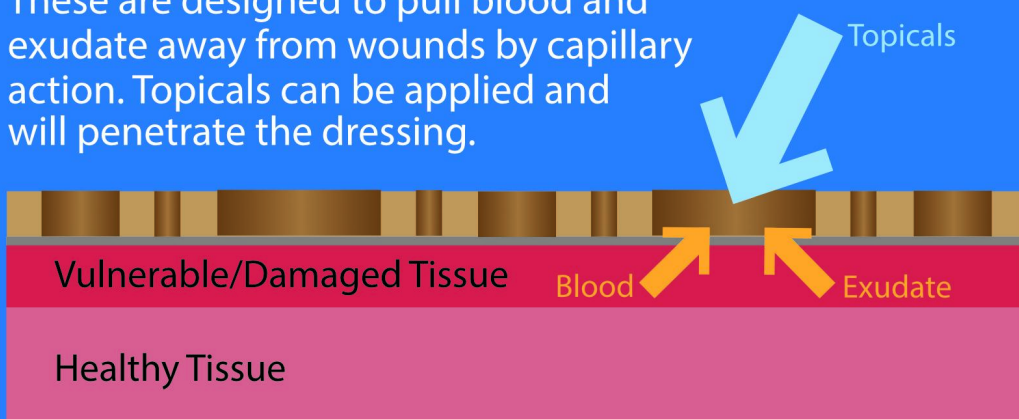


After blood and exudate is cleaned away, topicals/medicinals including Miracle of the Sea® Natural Marine Extract in Aloe Vera Gel can be added.

Miracle Professional Dressing™

Large Perforations:

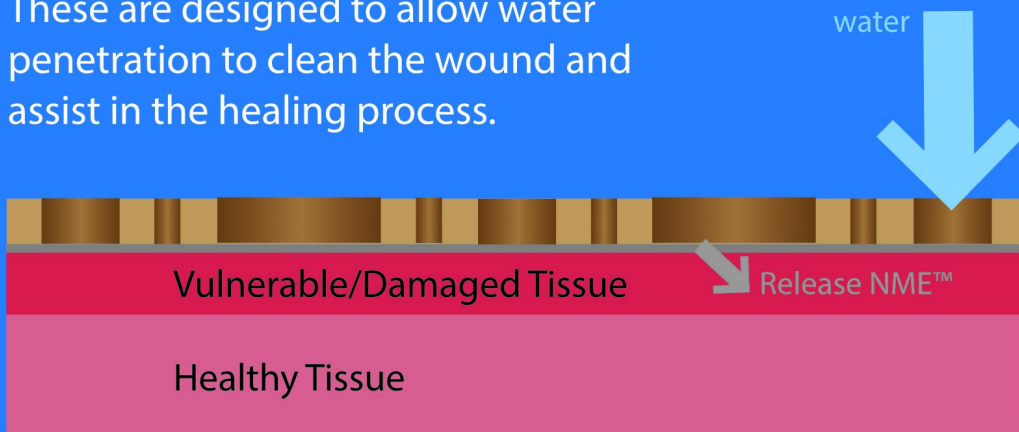
These are designed to pull blood and exudate away from wounds by capillary action. Topicals can be applied and will penetrate the dressing.



Miracle Professional Dressing™

Medium Pores:

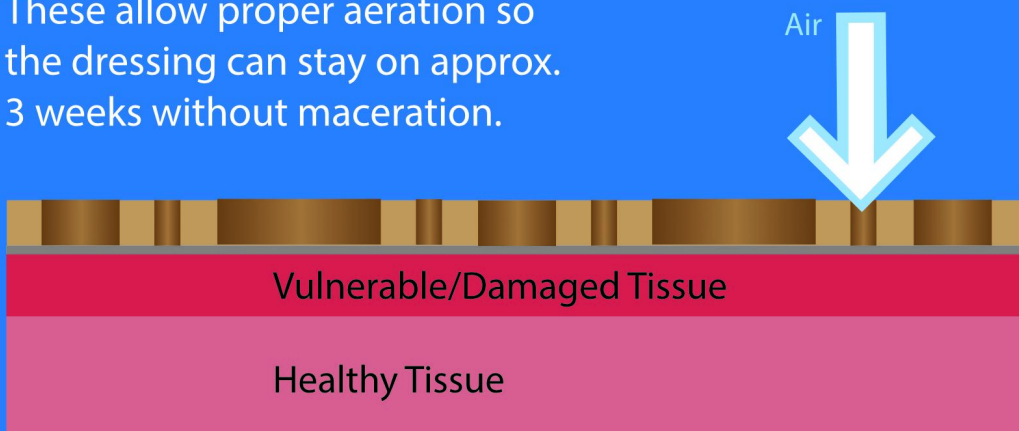
These are designed to allow water penetration to clean the wound and assist in the healing process.



Miracle Professional Dressing™

Small Pores:

These allow proper aeration so the dressing can stay on approx. 3 weeks without maceration.



Miracle of the Sea® Natural Marine Extract™ in Aloe Vera Gel

Natural Marine Extract (NME) is a therapeutic skin product developed and tested by dermatologists and plastic surgeons to successfully enhance thin, weak, atrophic skin. The ingredients of NME have been shown to 1). Increase fibrocyte metabolism allowing more production of collagen, elastin and hyaluronic acid and 2). Creating neovascularization. These are the bases for the accentuation of healing of even the toughest wounds. These create greater strength, elasticity, and thickness, which are the basic characteristics of young skin. NME also helps heal micro-fissures, which create a significant inflammatory reaction. Inflammation of the skin, as in all parts of the body, is the single most damaging process, causing cleaving of telomeres of DNA that leads to cellular dysfunction, aging and the propensity to damage from trauma, pressure, shear force or pinching.

During MBET's 17-year investigation of over 3,400 plant and animal substances from the ocean, its Marine Biology, Pharmaceutical and Physician Teams identified 88 transformative compounds with benefits for human health. These 88 compounds are now being deployed in different combinations and concentrations for cutaneous and systemic health benefits. Ingredients of these compounds have been shown to 1) rejuvenate old atrophic skin and heal wounds; 2) stimulate neovascularization and granulation tissue, and 3) stimulate the immune system to kill cancer cells. The first patented result of this extraordinary collaboration has been the development of Natural Marine Extract (NME).

Ingredients of our all natural, edible patented Natural Marine Extract include the following species in our unique formulations and concentrations. *Holothuria cinerascens* (ashy sea cucumber), *Spirulina pacifica* (Hawaiian spirulina), *Chalmys rubida* (Pacific pink scallop), *Strongylocentrotus franciscanus* (giant red urchin), *Holothuria mexicana* (donkey dung sea cucumber), *Haliotis fulgens* (green abalone), *Arthrospira platensis* (spirulina), *Stichopus chloronotus* (greenfish sea cucumber), *Strongylocentrotus purpuratus* (purple urchin), *Haliotis rufescens* (red abalone), *Holothuria scabra* (sandfish, a sea cucumber), *Ascophyllum nodosum* (knotted wrack kelp), *Macrocystis integrifolia* (giant kelp) and *Microcystis aeruginosa* (blue green algae).

Natural Marine Extract (NME)[™] Benefits

The ingredients of Natural Marine Extract have been shown to stimulate fibrocytes to:

- Increase collagen production and strengthen the skin
- Increase elastin production and make the skin more elastic
- Increase hyaluronic acid and make the skin thicker
- Create younger, thicker, healthier skin

The ingredients of Natural Marine Extract also:

- Act as an antioxidant, quelching free and hydroxyl radicals
- Provide anti-microbial qualities
- Act as an anti-inflammatory

The Healing Benefits of Natural Marine Extract:

- Promotes healing of pressure injuries, skin tears and ecchymoses
- Helps to heal burns, abrasions and superficial avulsions
- Seals micro-fissures of dry, atrophic skin
- Helps to improve the integrity, strength and resilience of injured skin

Mechanism of Action of Ingredients of NME

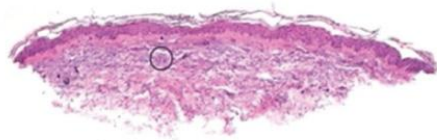
The ingredients of NME have been shown to stimulate stem cells, transforming them into new fibrocytes and new capillaries while they also lengthen telomeres to transform old, withered fibrocytes into young, productive fibrocytes. This rejuvenation process produces tremendous amounts of collagen, elastin, and hyaluronic acid. The effect is improved healing of wounds and stronger, healthier peripheral skin.



Natural Marine Extract 283-Subject Biopsy Comparison Study

Untreated Control

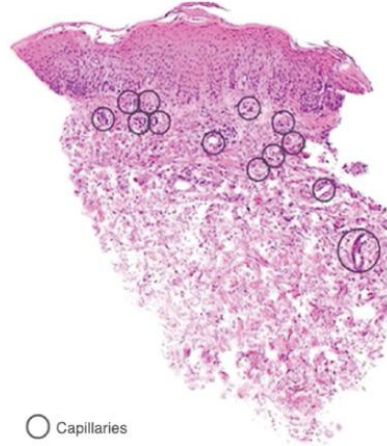
60 Year Old Skin Following 46 Applications of Lotion Without Natural Marine Extract™ (NME)



- The study used 46 applications over a four month period.
- The treatment created 10-15 times the number of blood vessels, 20-35 times the number of fibrocytes and two to six times the amount of collagen elastin and hyaluronic acid.
- The "skin age" of the treated 60 year old in this photo was now 30 years.

Treated With NME™

60 Year Old Skin Following 46 Applications of Miracle of the Sea® Lotion with 2% NME



○ Capillaries
Fibrocytes:
Every blue dot
represents a
fibrocyte.

Miracle of the Sea Natural Marine Extract (NME) Capsules

A healthcare professional or family caregiver may choose to recommend NME Capsules along with MPD. While NME Capsules are not required for MPD to be effective, they do provide synergistic, systemic support to the healing process.

NME Capsules contain the same marine species listed above, which are coarsely ground, with no fillers and no binders.

The Only 21-Day, Stay-In-Place Breathable Dressing That Promotes the Healing of Stage 1 and 2 Pressure Injuries and Other Superficial Wounds.



Patient with 2nd and superficial 3rd degree burns on buttocks and back.

MIRACLE PROFESSIONAL DRESSING (MPD) PROVIDES THESE IMPORTANT BENEFITS:

- Wounds can be cleaned and monitored with dressing in place
- Medicinals can be applied to the dressing and penetrate to the wound
- Reduces nursing time, effort and stress
- Decreases dressing and disposal costs
- Reduces pain and disruption of wound healing due to less frequent dressing changes

For more product information: MBETHealth.com • (800) 431-6238



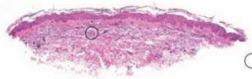
The Healing Power of Marine Science

NATURAL MARINE EXTRACT™ IN ALOE VERA GEL

BIOPSY COMPARISON TYPICAL RESULT

Untreated Control

60 Year Old Skin Following 46 Applications of Lotion Without Natural Marine Extract™ (NME)

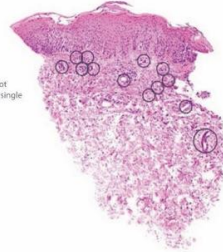


• The 283-subject study used 46 applications over a 4-month period.

• The treatment created 10-15 times the number of blood vessels, 20-25 times the number of fibrocytes, and two to six times the amount of collagen elastin and hyaluronic acid.

Treated With NME™

60 Year Old Skin Following 46 Applications of Miracle of the Sea Lotion® with 2% NME



○ Capillaries
○ Every blue dot represents a single Fibrocyte

NME INGREDIENTS:

- Increase hyaluronic acid, collagen and elastin production
- Generates younger, thicker, healthier skin
- Acts as an antioxidant, quenching free and hydroxyl radicals
- Provides anti-microbial qualities
- Moisturizes and promotes healthy skin to reduce skin breakdown
- Prevents and protects dry, chafed or cracked skin.
- Helps prevent transepidermal water loss (TEWL)
- Strengthens fragile, easily bruised skin
- Promotes healing of skin tears and ecchymoses.
- Helps to heal burns, abrasions and superficial avulsions
- Seals the micro-fissures of dry, atrophic skin
- Helps to improve the integrity, strength and resilience of injured skin

For more product information:

MiracleOfTheSea.com • (800) 711-6687